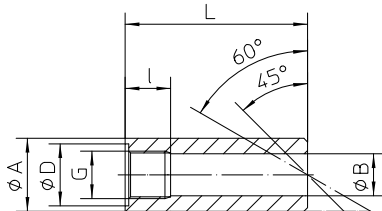


Connection parts for temperature measuring devices Type series MT

In order to achieve an optimal adaption to the temperature measuring point, if required we recommend that the shown adapters are ordered with the temperature measuring instruments resp. with the protection tubes. Welding adapters should be manufactured from the same material as the piping or the vessel, so as to guarantee good weldability.



WELDING SOCKET

material

stainless steel mat.-no. 1.4571, alternatively C22.8

design

straight with 50 and 100 mm lengths or 45° oblique

for straight screw-in threads (please specify variable dimensions separately)

Process connection

G 1/2, G 3/4, G 1
model X per DIN 3852

special design

with certification on material testing per DIN 50049/EN 10204

dimensions (mm)				
G	A	D	B	I
G 1/2	35	27	18.5	25
G 3/4	40	33	23	25
G 1	50	40	30	25

Order Details

- please give additional specifications for models not listed -

welding socket		
process connection/ material	· G 1/2, stainless steel 1.4571	MT4110
	· G 1/2, steel C 22.8	MT4120
	· G 3/4, stainless steel 1.4571	MT4210
	· G 3/4, steel C 22.8	MT4220
	· G 1, stainless steel 1.4571	MT4310
steps of lengths	· L = 50 mm	A10
	· L = 100 mm	A20
Order code (example):		MT4110 A10

SLIDING SCREWING

process connection

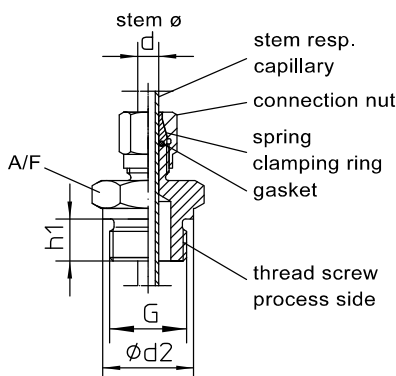
G 1/2 A, G 3/4 A, G 1 A further designs upon request

material

stainless steel mat.-no. 1.4571

design

for bulbs with Ø 6 mm to Ø 12 mm, see order code, further dimensions (e.g. for capillary) upon request



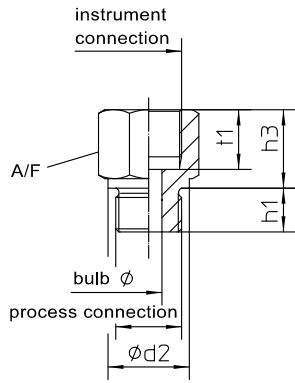
dimensions (mm)			
process connection	d2	h1	A/F
G 1/2 A	26	12	27
G 3/4 A	32	12	32
G 1 A	39	16	41

Order Details

- please give additional specifications for models not listed -

sliding screwing		
process connection	· G 1/2 A	MT2100
	· G 3/4 A	MT2200
	· G 1 A	MT2300
for bulb Ø	· 6 mm	A1
	· 8 mm	A2
	· 9 mm	A3
	· 10 mm	A4
	· 12 mm	A5
	· 13 mm - only with MT2200 and MT2300	A6
for temperatures	· ≤ 250 °C, with PTFE gasket and clamping ring of st. steel *	2
	· ≤ 450 °C, with clamping ring of st. steel for unpressurized applications	3
Order code (example):		MT2100 A22

* compression-proof up to 10 bar



dimensions (mm)						
device connection	process connection	d2	h1	h3	l1	A/F
G 1/2	G 1/2 A	26	14	25	19	27
G 1/2	G 3/4 A	32	16	25	19	32
G 3/4	G 1/2 A	26	14	29	22	32
G 3/4	G 3/4 A	32	16	29	22	32

SCREWED SOCKET

device connection

G 1/2, G 3/4, further designs upon request

process connection

G 1/2 A, G 3/4 A, further designs upon request

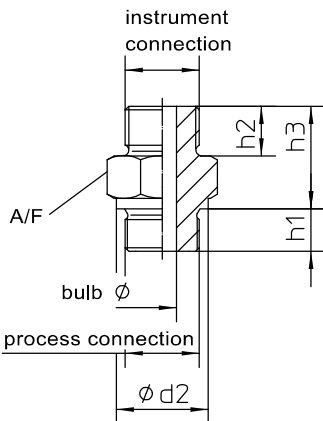
material

stainless steel mat.-no. 1.4571

Order Details

- please give additional specifications for models not listed -

screwed socket		
device connection	· G 1/2	MT11
device connection	· G 3/4	MT12
process connection	· G 1/2 A	10
process connection	· G 3/4 A	20
for bulb Ø	· 6 mm	A1
	· 8 mm	A2
	· 10 mm	A4
	· 12 mm	A5
Order code (example):		MT1110 A2



dimensions (mm)						
device connection	process connection	d2	h1	h2	h3	A/F
G 1/2 A	G 1/2 A	26	14	12	25	27
G 1/2 A	G 3/4 A	32	16	12	25	32
G 3/4 A	G 1/2 A	26	14	14	29	32
G 3/4 A	G 3/4 A	32	16	14	29	32

DOUBLE NIPPLE

device connection

G 1/2 A, G 3/4 A, further designs upon request

process connection

G 1/2 A, G 3/4 A, further designs upon request

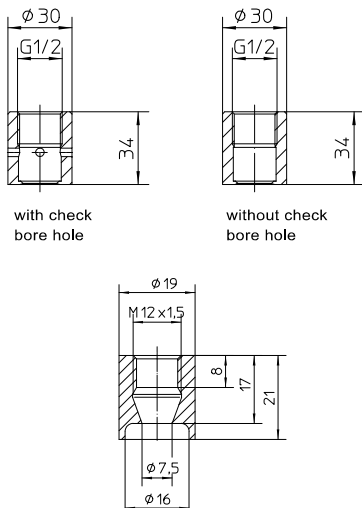
material

stainless steel mat.-no. 1.4571

Order Details

- please give additional specifications for models not listed -

Double nipple		
device connection	· G 1/2 A	MT31
device connection	· G 3/4 A	MT32
process connection	· G 1/2 A	10
process connection	· G 3/4 A	20
for bulb Ø	· 6 mm	A1
	· 8 mm	A2
	· 10 mm	A4
	· 12 mm	A5
Order code (example):		MT3110 A2



WELD-IN SOCKETS

process connection

G 1/2 B and M 12 x 1.5 conical seal

material

stainless steel mat.-no. 1.4404

Order Details

- please give additional specifications for models not listed -

Weld-in socket G 1/2		
process connection	· conical seal Ø 30 mm	MT8100
check bore hole	· without	A1
	· with	A2
Order code (example):		MT8100 A2

Weld-in socket M12 x 1.5 for top of pipe neck		
process connection	· conical seal Ø 19 mm	MT8110 A5
Order code (example):		MT8110 A5