



Features

- Limit switch for the fill level for liquids
- Particularly suitable as a substitute for vibrating fork sensor systems
- 7 base settings for several medias
- Further setting via PC and programming interface (option)
- Suitable for medias with a permittivity > 2
- Hygienic installation as per EHEDG
- CIP/SIP cleaning up to 150 °C / max. 30 min
- Various process connections via adapter
- Wetted parts in correspondence with FDA
- Defined position of electrical connector
- Insensitive to vibrations

Application

The limit switch LIMES is used to detect fill levels and for dry run protection for liquids or paste-like and adhesive medias. With an interface it's possible to adjust the sensitivity of the unit to the particular device. Adherence and passing-off characteristics of medias are visualizable with the software.

Techn. Data

case design

field housing, material 1.4305
case protection type: IP 67 (EN 60529)
screw-on cover

Electrical connection

- M16 cable gland
- "WAGO" spring-loaded terminals for wire sizes 0.08 up to 2.5 mm²
- M12 plug socket (without connector)

Wetted parts

PEEK, FDA compliant

Measurement system

electromagnetic wave

Auxiliary power supply

operating voltage: 18...32 V DC
max. 50 mA without switching load
The housing is connected to negative supply voltage.

Output signal

active, max. 50 mA, short-circuit-proof,
LED-display red when probe is covered,
reversible output (inversion),
response time < 0.2 s

Switching function

electrical output, active high
max. 50 mA, short-circuit-proof
reversible: when probe tip is covered/uncovered, response time < 0,2 s or adjustable time delay

Operating pressure

max. 16 bar

Temperature range

- short periods: up to 150 °C, 30 min.
- ambient temperature -10...+70 °C
- process temperature -0...100 °C
- short periods: (30 min) up to 150 °C
- storage temperature -20...+70 °C

Process connection

G 1/2 B, material stainless steel, elastomer-free sealing system, torque max. 5...10 Nm

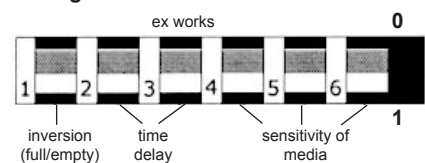
Weight

approx. 0.6 kg

Sensitivity adjustment of various media

switch			turn on/off values in %	
6	5	4	on	off
0	0	0	86	84
0	0	1	97	96
0	1	0	72	70
0	1	1	60	58
1	0	0	50	48
1	0	1	11	9
1	1	0	5	4
1	1	1	configurable via PC and programming interface (option)	

Configuration switch



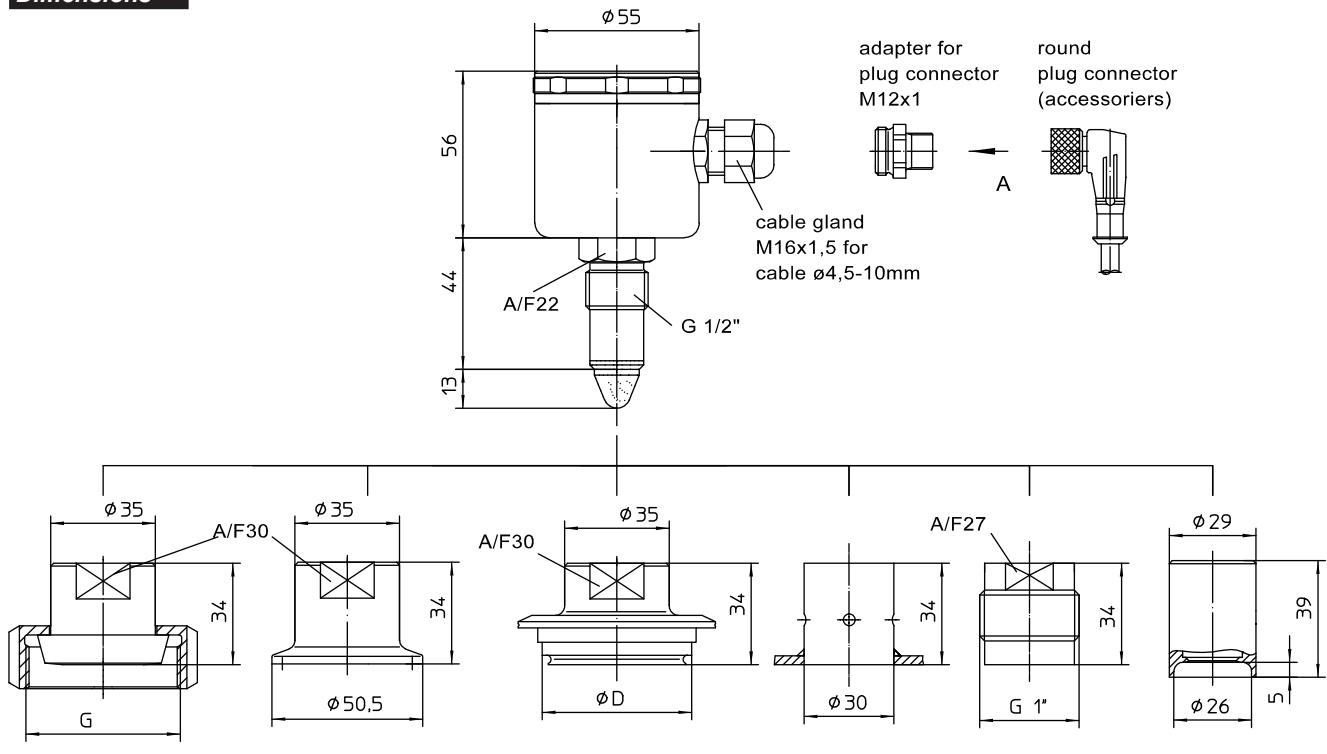
Delay

switch		delay in sec
3	2	
0	0	0
0	1	2
1	0	4
1	1	8

Visualization via PC-USB interface Software incl. for readout and parametrization

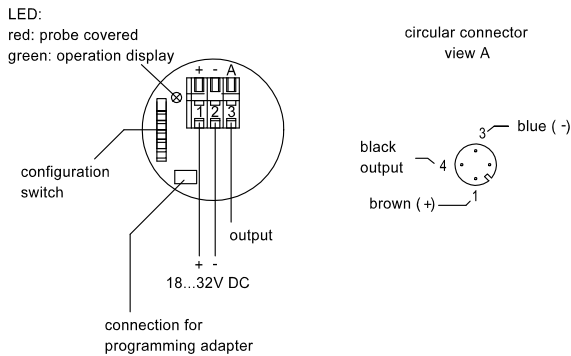


Dimensions



- sanitary connection
union nut DIN 11851
DN25 G=Rd.52x1/6
DN32 G=Rd.58x1/6
DN40 G=Rd.65x1/6
DN50 G=Rd.78x1/6
- clamp connection
Tri-Clamp 1"-1 1/2"
ISO 2852 DN25 (1")
DN38 (1 1/2")
DIN 32676 DN25-DN40
- varivent connection
D=50 for varivent-case
DN25 und 1"
D=68 for varivent-case
DN 40-125 und 1 1/2"...6"
- welded-in socket
optionally with
or without
check bore hole
- adapter sleeve
for vibrating
fork G 1"
- adapter sleeve
for top of
pipe neck

Electrical connection



Order Details - please give additional specifications for models not listed -

Limit switch LIMES		LV1110	
process connection	· G 1/2 B		A10
electrical connection	· M 16 x 1.5 cable gland, PA black, standard		T15
	· M 12 x 1 circular connector (4pin)		T30
Order code (example):		LV1110	A10 T15

accessories

PC-USB interface Software incl. for readout and parametrization of limit switch LIMES				MC1310
process connection adapter, conical seal	welding sleeve	stainless steel mat.no. 1.4404	Ø 30 mm Ø 30 mm with inspection bore	MT8100-A1 MT8100-A2
	adapter sleeve	stainless steel mat.no. 1.4571	for vibrating fork G 1"	MC1410-K2510-E2
	union nut DIN 11851	stainless steel mat.no. 1.4404	· DN 25	MC1410-K1110-E1
			· DN 32	MC1410-K1120-E1
			· DN 40	MC1410-K1130-E1
			· DN 50	MC1410-K1140-E1
	Varivent	stainless steel mat.no. 1.4404	· D = 50 for Varivent housing DN 25 and 1"	MC1410-K2020-E1
			· D = 68 for Varivent housing DN 40...DN 125 and 1 1/2"...6"	MC1410-K2030-E1
Clamp connection	stainless steel mat.no. 1.4404	per ISO 2852	· DN 25/38 (1" / 1 1/2") Ø 50.5 mm	MC1410-K1610-E1
		per DIN 32676	· DN 25/40, Ø 50.5 mm	MC1410-K1510-E1
		Tri-Clamp	· 1" / 1 1/2", Ø 50.5 mm	MC1410-K1710-E1