



Features

- Flush-mounted separating diaphragm of stainless steel, welded by laser
- Volume optimized diaphragm base
- EHEDG-approval for DIN 11864-1, aseptic screwing and NEUMO BioConnect
- Connection of measuring instrument:
 - directly welded
 - directly screwed
 - with temperature decoupler
 - with capillary

Options

- Material certificate acc. to DIN EN 10204-3.1
- Hygienic design with advanced surface quality

Application area

- Food industry
- Pharmaceutical industry
- Biotechnology

Application

Suitable for mounting to bourdon tube pressure gauges and pressure transmitters. The diaphragm seal in aseptic design is used mainly for dead-zone free measuring.

Technical Data

Process connections for pipes per DIN, ISO and Inch

Aseptic connections per

- DIN 11864
- Südmö
- Guth
- NEUMO BioConnect

Further connection designs upon request

Diaphragm seal material

basic body:

st. steel mat. no. 1.4435 (316L)

coupling nut:

st. steel

Nominal pressure/nominal widths

see table

Separating diaphragm

standard material: st. steel mat. no. 1.4435 (316L), further materials upon request

Measuring instrument connection

- directly welded/screwed
 - with temperature decoupler
 - with capillary
- see order code
material stainless steel

Process temperature

dependent on measuring system, diaphragm seal filling liquid and installation.

Diaphragm seal filling liquid

see data sheet D5-003.

Standard according to order code

Hygienic design

surface formation of wetted parts as per EHEDG guidelines ($R_a \leq 0.8 \mu\text{m}$)

Installation instructions

see operating instructions BTA-062

Weights

with measuring instrument connection G 1/2 see table

Measuring instrument connection

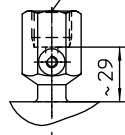
directly welded
Code: A400

pressure gauge or
pressure transmitter



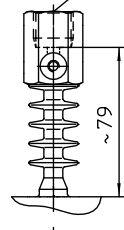
directly screwed
Code: A300

connection per
DIN EN 837-1

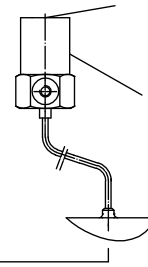


temperature decoupler
Code: A100

connection per
DIN EN 837-1



capillary
welded Code: B40../B50..
screwed Code: B20../B10..



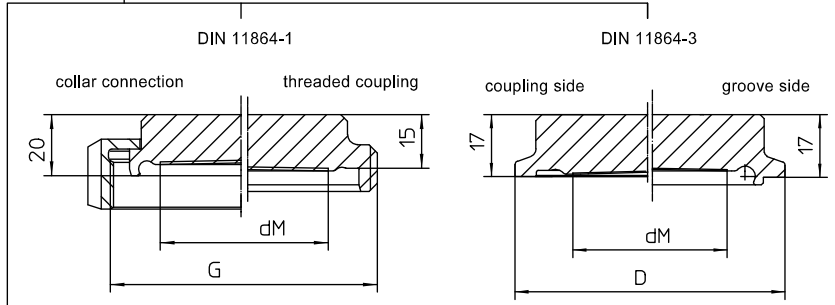
connection
welded/screwed
per DIN EN 837-1
prepared for
wall bracket see
data sheet no.
D6-032

screwed version

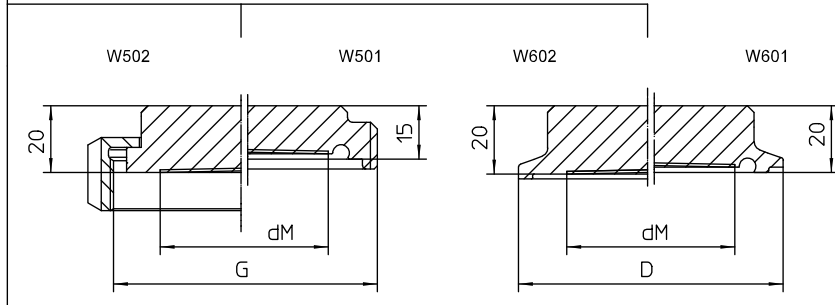
clamp version



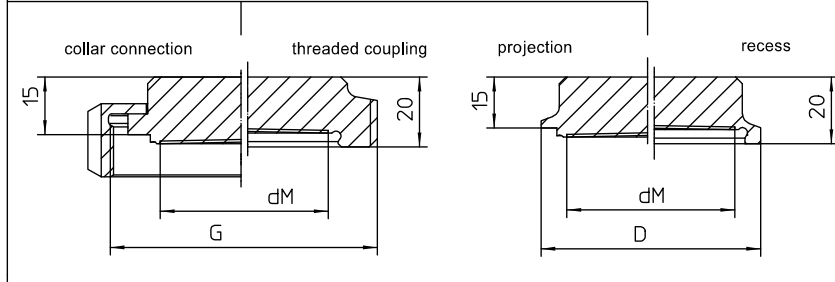
aseptic connection
per DIN 11864
type A



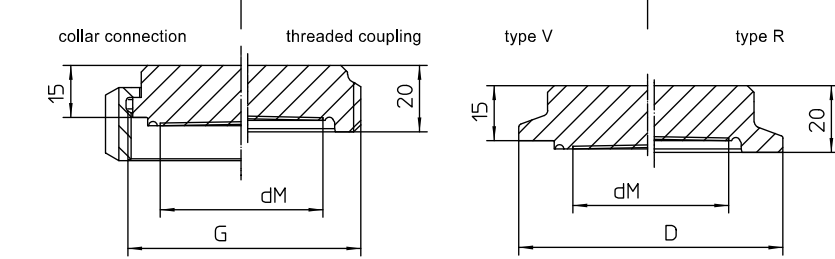
aseptic connections
per Südmö



aseptic connections
per Guth



aseptic connections
per NEUMO BioConnect



Diaphragm seals for pipes per DIN 11850 - pipe dimensions per DIN 11866 table 2 model A

Dimensions			aseptic connections																
nominal width	pipe inside diameter	dM	connection per DIN 11864				Südmö				Guth				NEUMO BioConnect				
			nominal pressure	round thread connection per DIN 11864-1 model A	nominal pressure	clamp connection per DIN 11864-3 model A	nominal pressure	round thread connection per Südmö W500	nominal pressure	clamp connection per Südmö W600	nominal pressure	round thread connection per Guth	nominal pressure	clamp connection per Guth	nominal pressure	angular thread per Neumo	nominal pressure	clamp connection per Neumo	weight approx.
DN	di		PN	thread	PN	D	PN	thread	PN	D	PN	thread	PN	D	PN	thread		D	
	[mm]			G [Rd]		[mm]		G [Rd]		[mm]		G [Rd]		[mm]		G [M]		[mm]	[kg]
25	26	24	40	52x1/6"	40	50.5	25	52x1/6"	16	50.5	40	52x1/6"	16	50.5	16	42x2	16	50.4	0.3
32	32	30	40	58x1/6"	40	50.5	25	58x1/6"	16	50.5	40	58x1/6"	16	50.5	16	52x2	16	50.4	0.4
40	38	34	40	65x1/6"	40	64.0	25	65x1/6"	16	64.0	40	65x1/6"	16	50.5	16	56x2	16	64.0	0.5
50	50	48	25	78x1/6"	25	77.5	20	78x1/6"	16	77.5	25	78x1/6"	16	64.0	16	68x2	16	77.4	0.6
65	66	65	25	95x1/6"	25	91.0	20	95x1/6"	10	91.0	25	95x1/6"	10	91.0	16	90x3	10	90.9	0.9

Diaphragm seals for pipes per DIN EN ISO 1127 - pipe dimensions per DIN 11866 table 2 model B

Dimensions			aseptic connections																
nominal width	pipe inside diameter	dM	connection per DIN 11864				Südmö				Guth				NEUMO BioConnect				
			nominal pressure	round thread connection per DIN 11864-1 model A	nominal pressure	clamp connection per DIN 11864-3 model A	nominal pressure	round thread connection per Südmö W500	nominal pressure	clamp connection per Südmö W600	nominal pressure	round thread connection per Guth	nominal pressure	angular thread per Neumo	nominal pressure	clamp connection per Neumo	weight approx.		
DN/OD	di		PN	thread	PN	D	PN	thread	PN	D	PN	thread	PN	thread	PN	D		D	
	[mm]			G [Rd]		[mm]		G [Rd]		[mm]		G [Rd]		G [M]		[mm]	[kg]		[kg]
33.7	29.7	27	40	58x1/6"	40	50.5	25	52x1/6"	16	50.5	16	44x1/6"	16	42x2	16	50.4	0.4		
42.4	38.4	34	25	65x1/6"	25	64.0	25	65x1/6"	16	64.0	16	58x1/6"	16	52x2	16	50.4	0.5		
48.3	44.3	40	25	78x1/6"	25	64.0	25	65x1/6"	16	64.0	16	58x1/6"	16	56x2	16	64.0	0.6		
60.3	56.3	51	25	95x1/6"	25	91.0	20	78x1/6"	6	77.5	16	78x1/6"	16	68x2	16	77.4	0.8		

Diaphragm seals for pipes per ASME-BPE 1997 - pipe dimensions per DIN 11866 table 2 model C

(suitable for pipes per BS 4825 Part 3 and O.D. Tube)

Dimensions			aseptic connections																
nominal width	pipe inside diameter	dM	connection per DIN 11864				Südmö				Guth				NEUMO BioConnect				
			nominal pressure	round thread connection per DIN 11864-1 model A	nominal pressure	clamp connection per DIN 11864-3 model A	nominal pressure	round thread connection per Südmö W500	nominal pressure	clamp connection per Südmö W600	nominal pressure	round thread connection per Guth	nominal pressure	clamp connection per Guth	nominal pressure	angular thread per Neumo	nominal pressure	clamp connection per Neumo	weight approx.
DN/OD	di		PN	thread	PN	D	PN	thread	PN	D	PN	thread	PN	D		D		D	
[Zoll]	[mm]			G [Rd]		[mm]		G [Rd]		[mm]		G [Rd]		[mm]	[kg]		[kg]		[kg]
1"	22.1	18	40	52x1/6"	40	50.5	25	44x1/8"	16	50.5	25	52x1/6"	16	50.5	0.3				
1 1/2"	34.8	30	40	65x1/6"	40	64.0	25	58x1/8"	16	64.0	25	65x1/6"	16	50.5	0.5				
2"	47.5	42	25	78x1/6"	25	77.5	20	78x1/6"	16	77.5	20	78x1/6"	16	64.0	0.6				
2 1/2"	60.2	51	25	95x1/6"	25	91.0	20	95x1/6"	16	91.0	20	95x1/6"	16	77.5	0.9				

Designation of internal pipe diameter in accordance with tolerances of respective standard.

Order Details - please give additional specifications for models not listed -

Diaphragm seal for food/pharmaceutical/biotechnology - aseptic design			
design	for pipes per DIN 11850, pipe dimensions per DIN 11866 table 2 model A	DL51 . .	
nominal width	process connection	pipe inside-Ø di	
	· DN 25	26 mm	
	· DN 32	32 mm	
	· DN 40	38 mm	
	· DN 50	50 mm	
	· DN 65	66 mm	
form of process connection	per DIN 11864-1, model A ⁴	· collar connection with coupling nut	
	per DIN 11864-3, model A ⁴	· clamp connection, coupling side	
	Südmö	· round thread (W501) ³	S2001
		· collar connection with coupling nut (W502) ³	S2101
		· clamp connection (W601)	S2202
		· clamp connection (W602)	S2203
	Guth	· threaded coupling ³	S3001
		· collar connection with coupling nut ³	S3101
		· clamp connection (recess)	S3202
		· clamp connection (projection)	S3203
	Neumo ⁴	· threaded coupling	S4001
		· collar connection with coupling nut	S4101
· clamp connection (model R)		S4202	
· clamp connection (model V)		S4203	
further aseptic connections upon request		S	

To be continued next page

